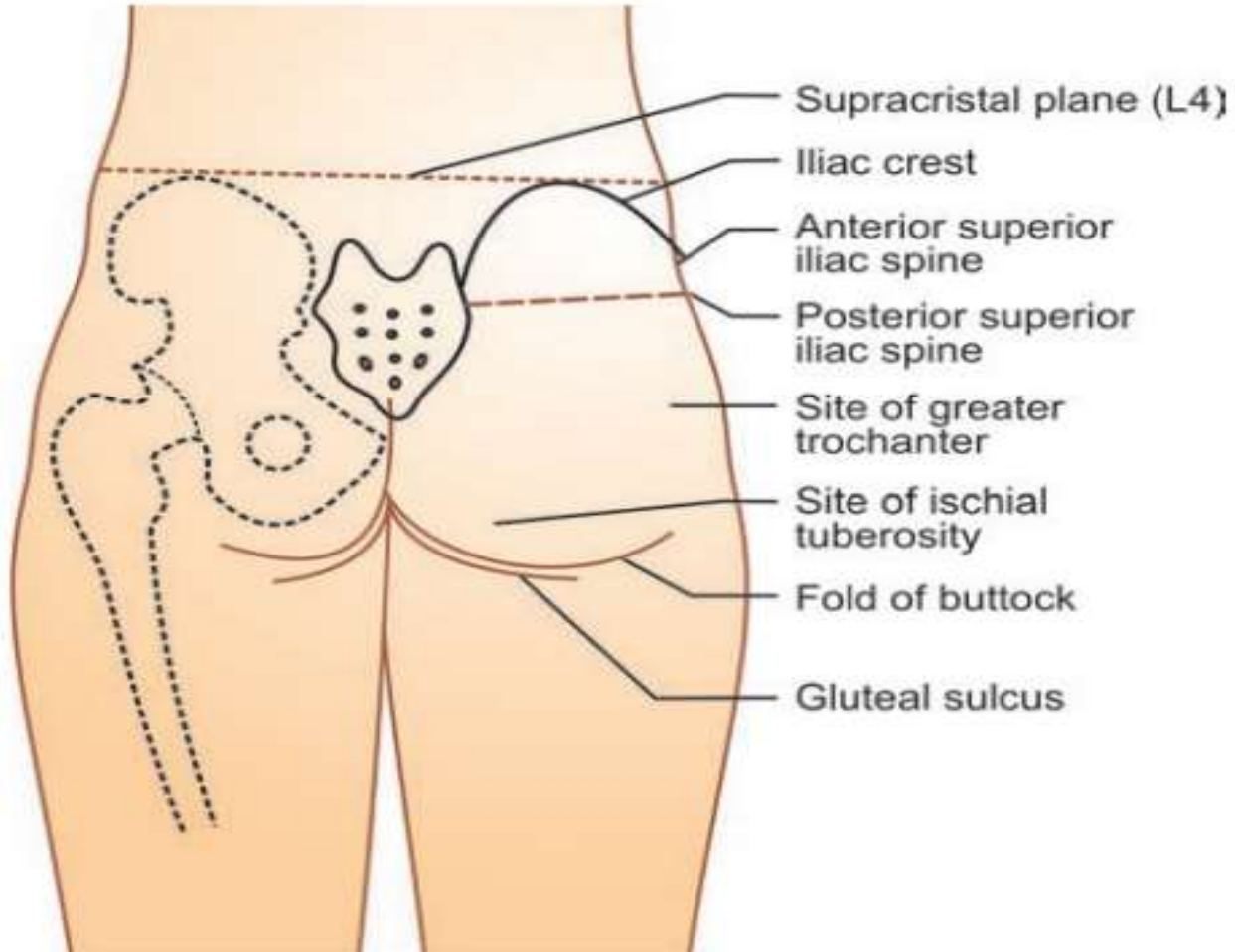


# GLUTEAL REGION

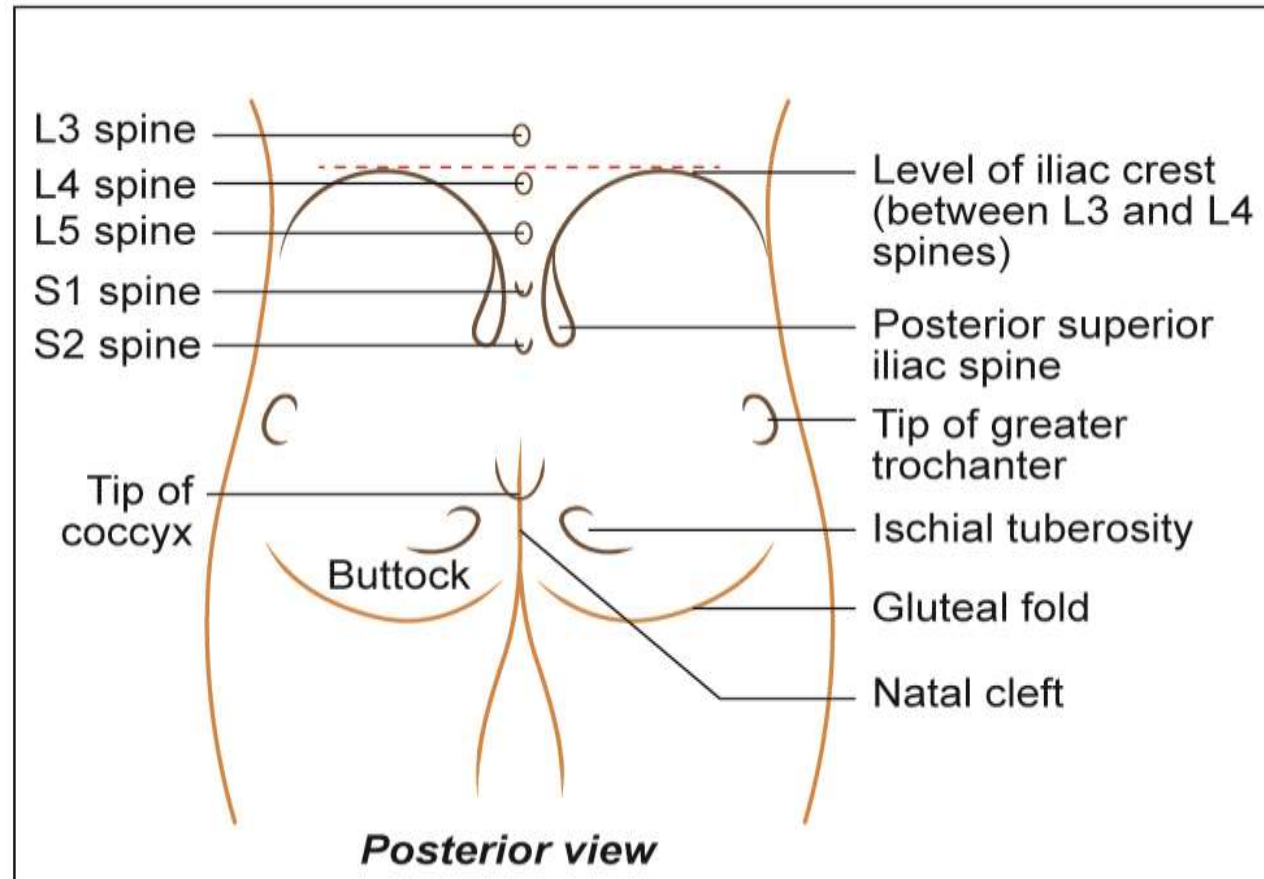


**Dr.H.S.Mohite**  
**Assistant professor**  
**Anatomy Dept.**

# GLUTEAL REGION

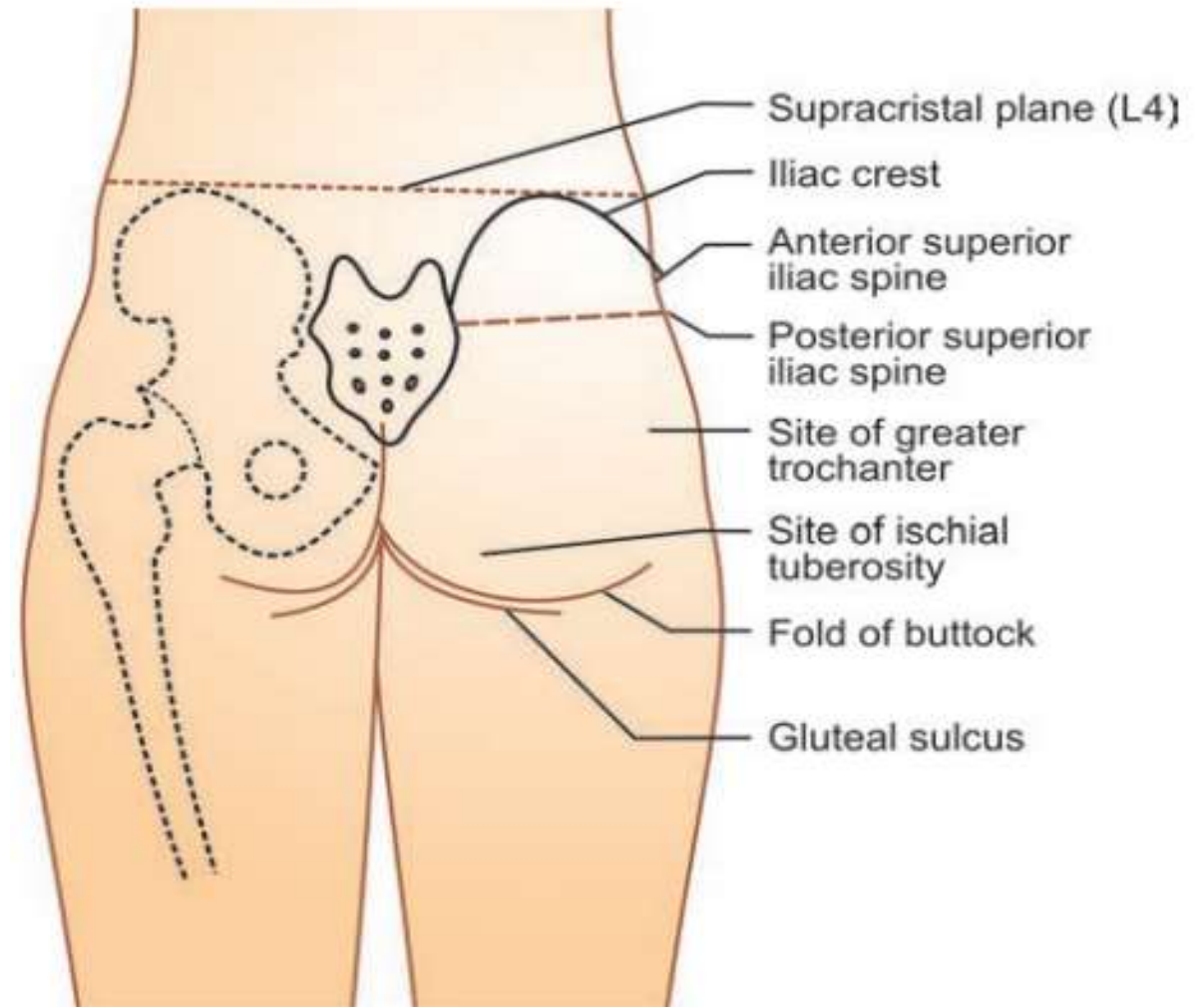
## INTRODUCTION

- The gluteal region or buttock is a prominent bulge at the lower back produced by the subcutaneous fat and the bulky gluteus maximus muscle.



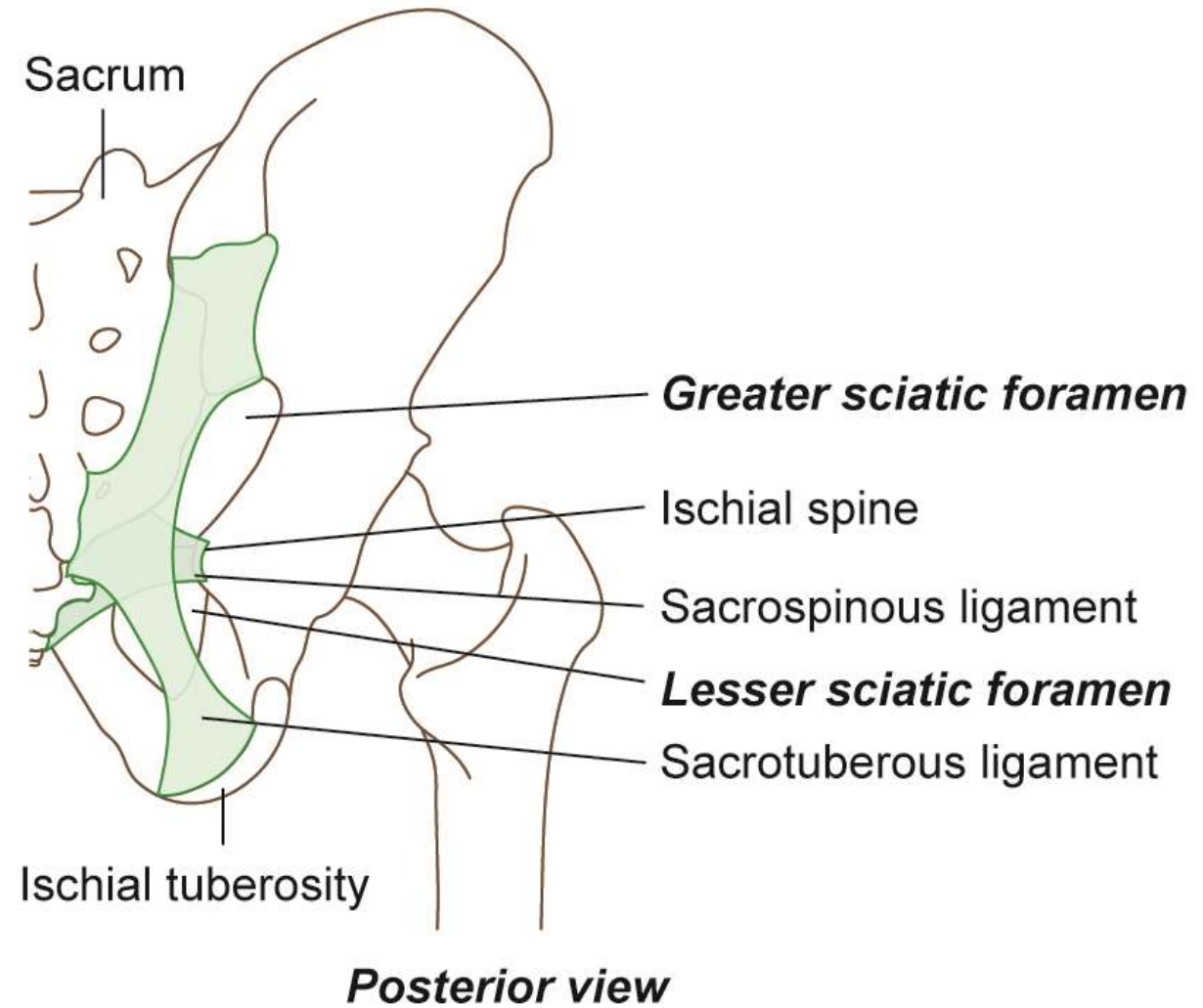
# Boundaries

- **Superiorly** by the iliac crest
- **Superomedially** by the sacrum
- **Inferiorly**, the gluteal sulcus separates it from the thigh
- **Medially**, there is natal cleft.
- A line joining the anterior superior iliac spine to the front of the greater trochanter of femur limits the region laterally.

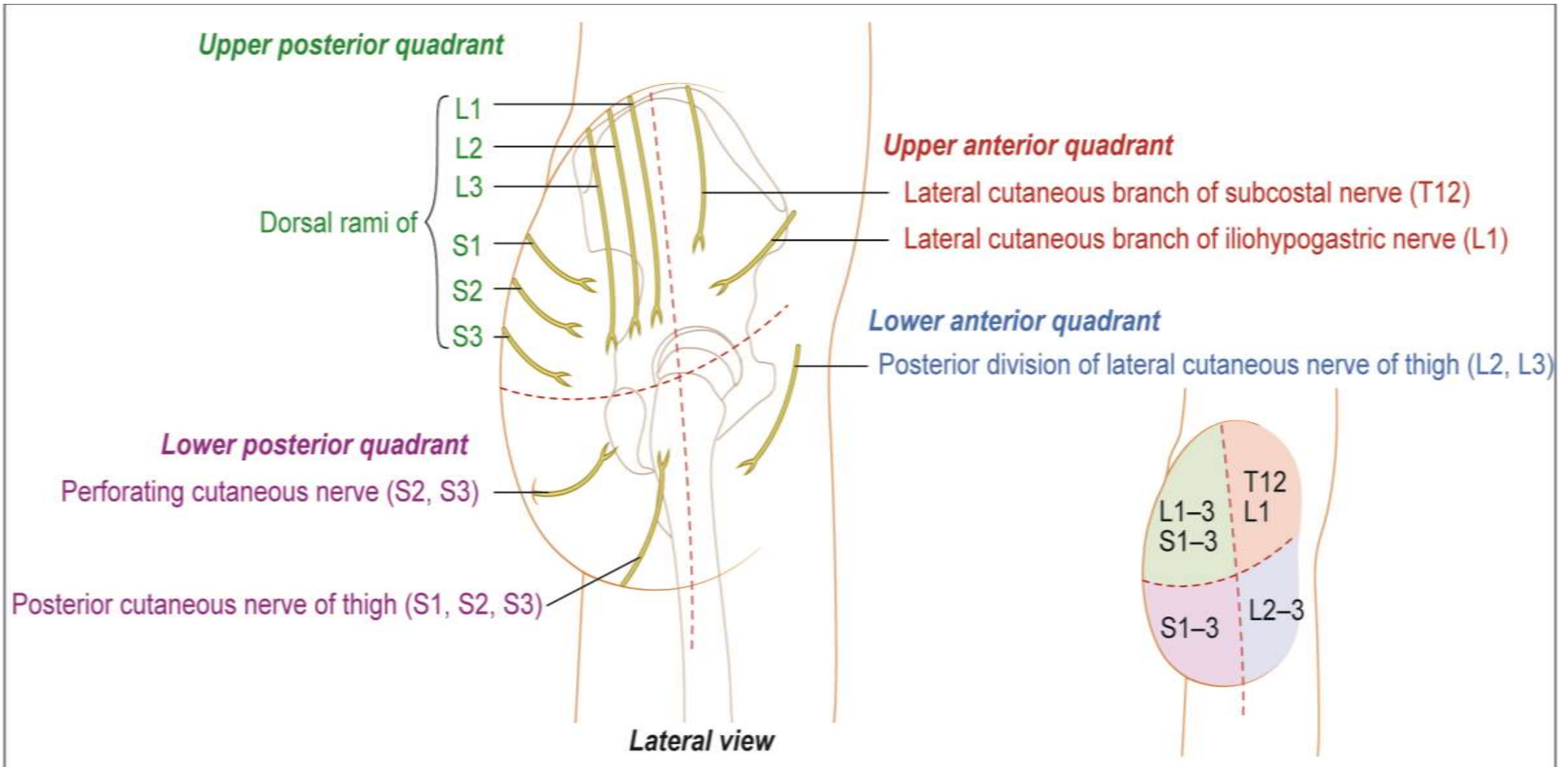


# Communications

- The gluteal region communicates with the pelvic cavity through the greater sciatic foramen.
- It communicates with the ischiorectal fossa through the lesser sciatic foramen.
- Inferiorly, it is continuous with the posterior compartment of thigh.



# Cutaneous innervation of gluteal region





# MUSCLES OF GLUTEAL REGION

- Ten muscles in gluteal region
- Arranged into two layers as follows

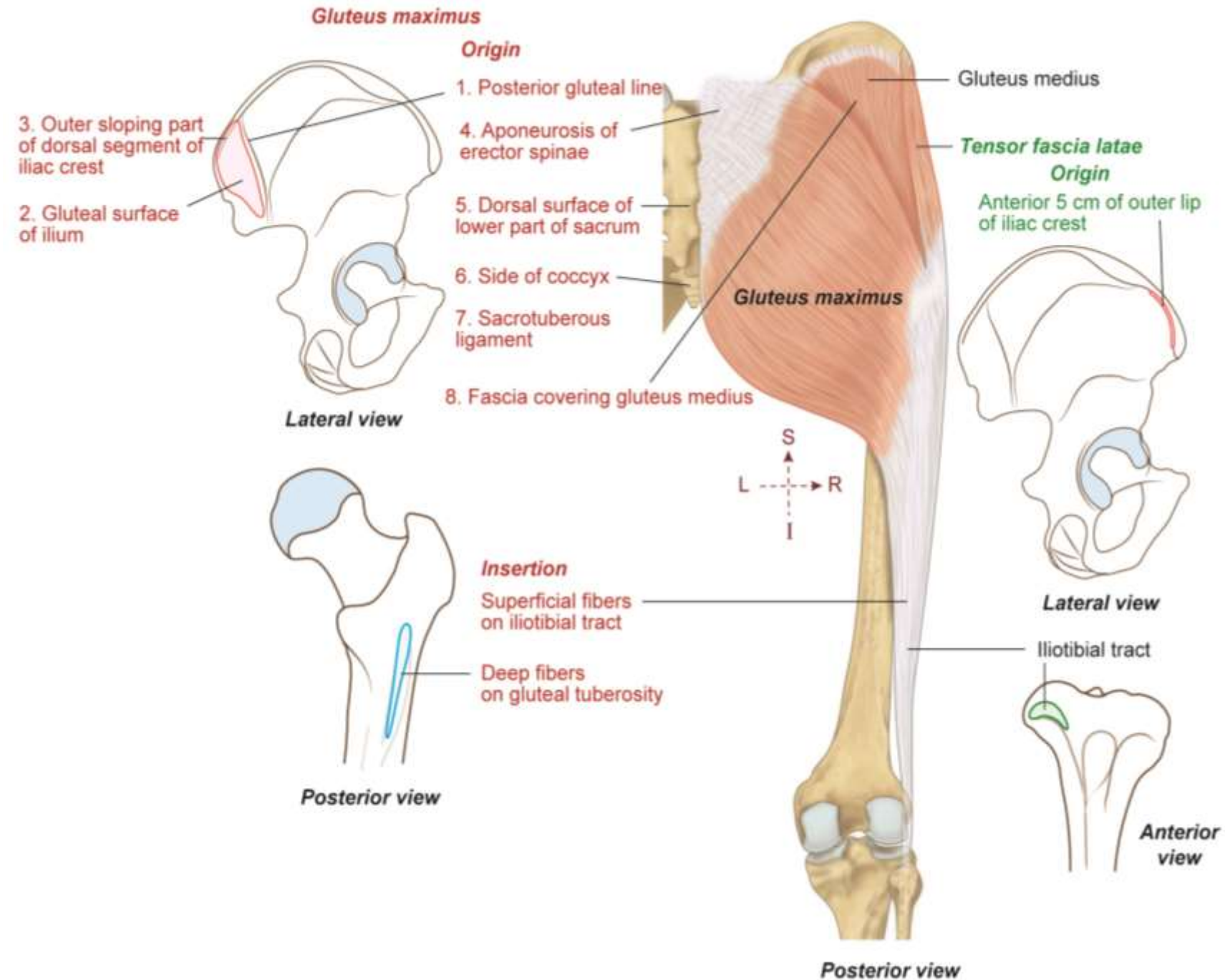
## *Superficial layer*

- Includes gluteus maximus, gluteus medius, gluteus minimus, and tensor fascia latae
- Mainly rotators of thigh

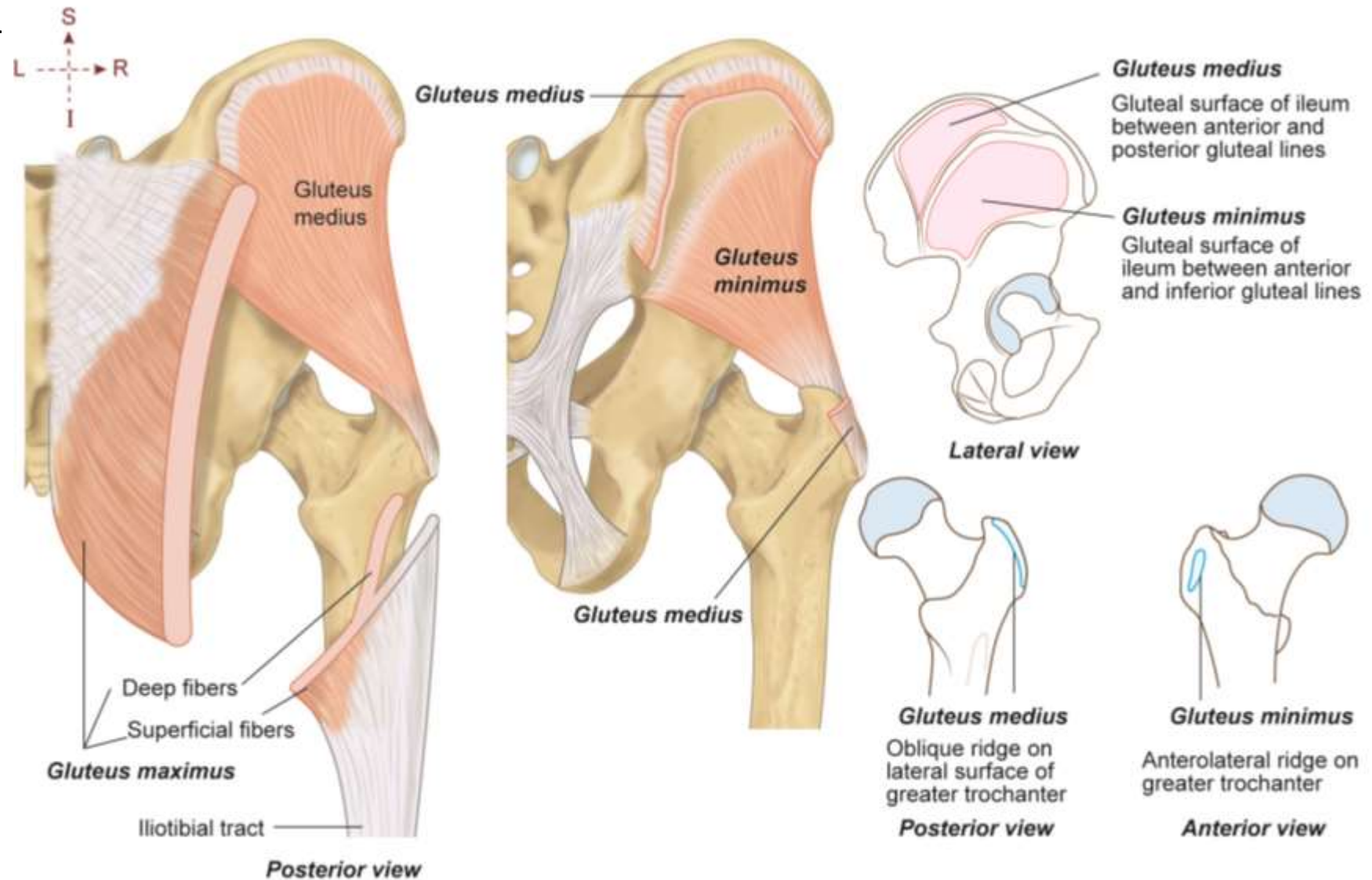
## *Deep layer*

- Consists of piriformis, superior gemellus, inferior gemellus, obturator internus, quadratus femoris, and obturator externus
- Covered by gluteus maximus muscle posteriorly
- Lateral rotators of femur and stabilize hip joint

# Gluteus maximus origin & insertion

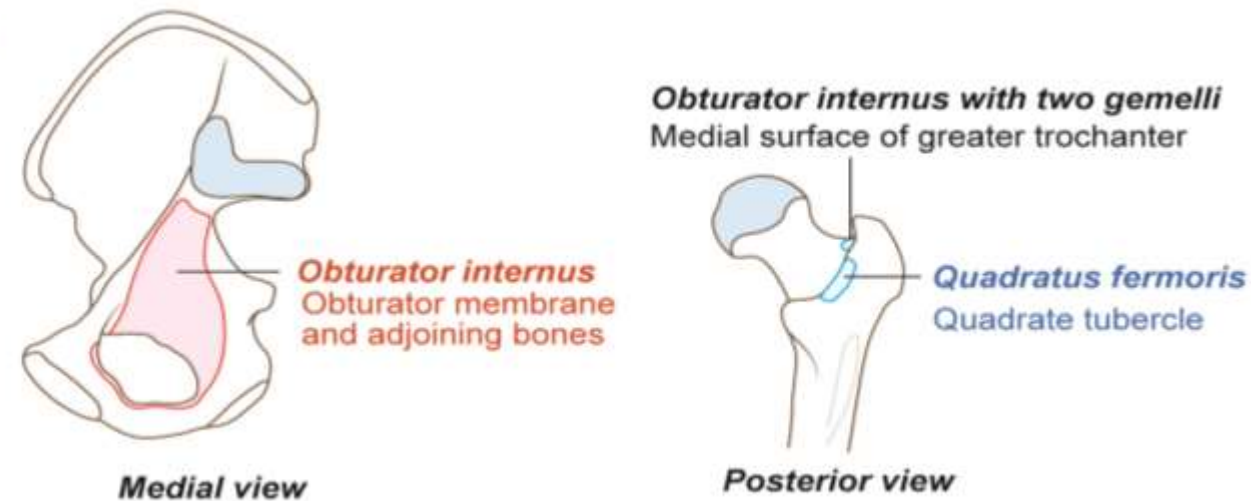
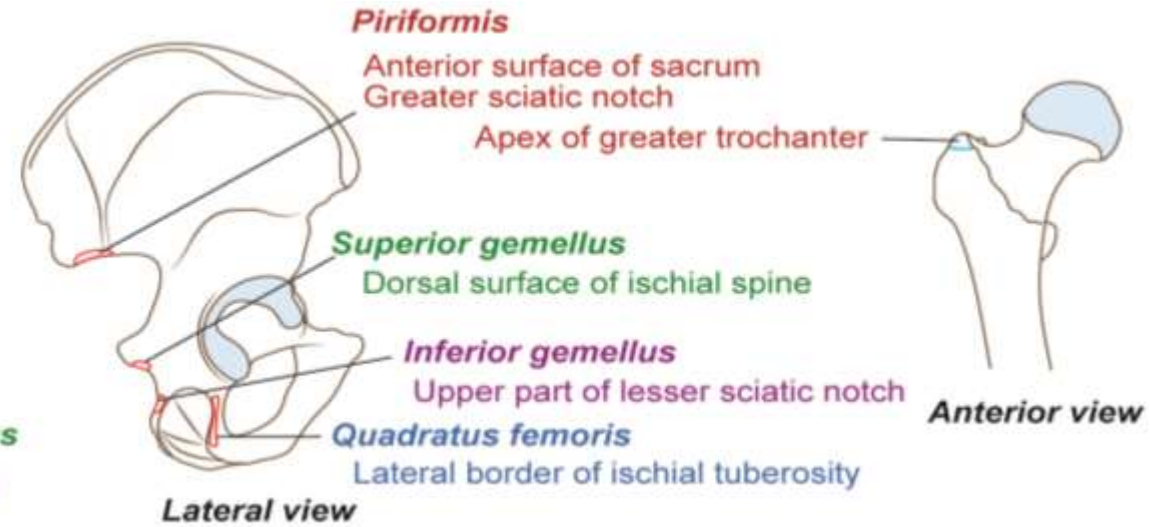
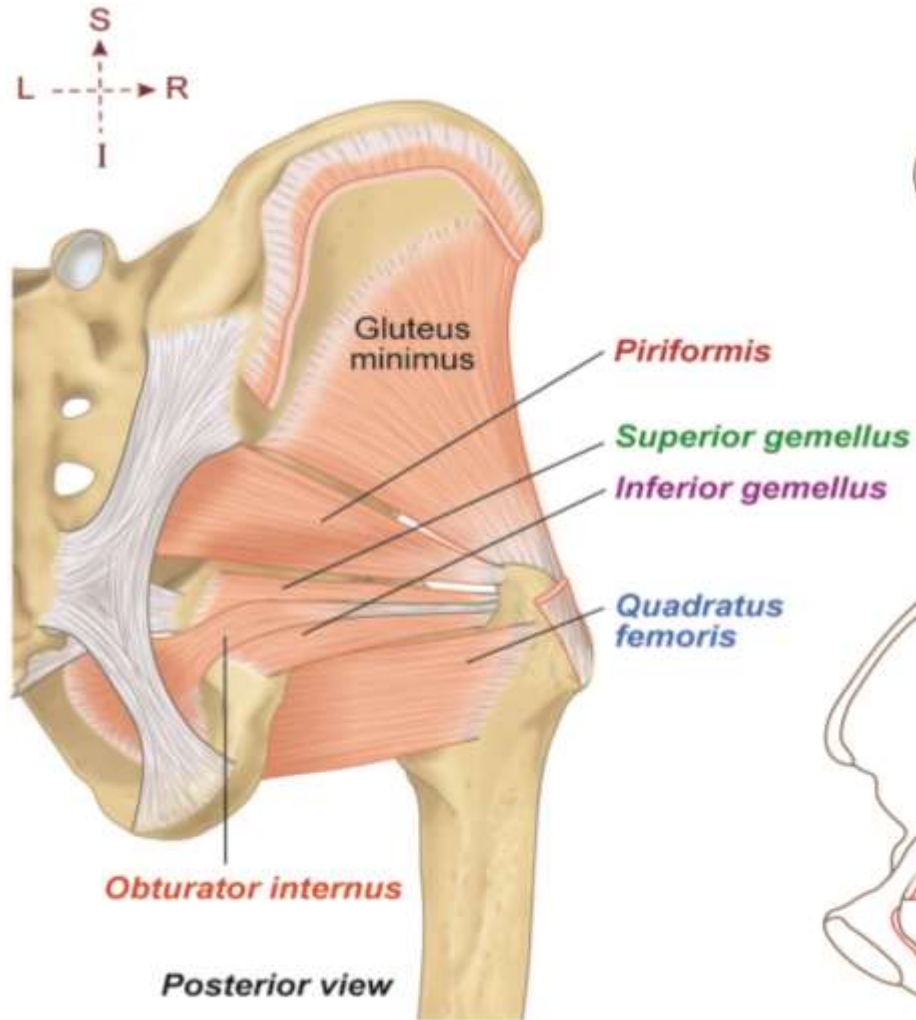


# Gluteus medius & Gluteus minimus origin & insertion



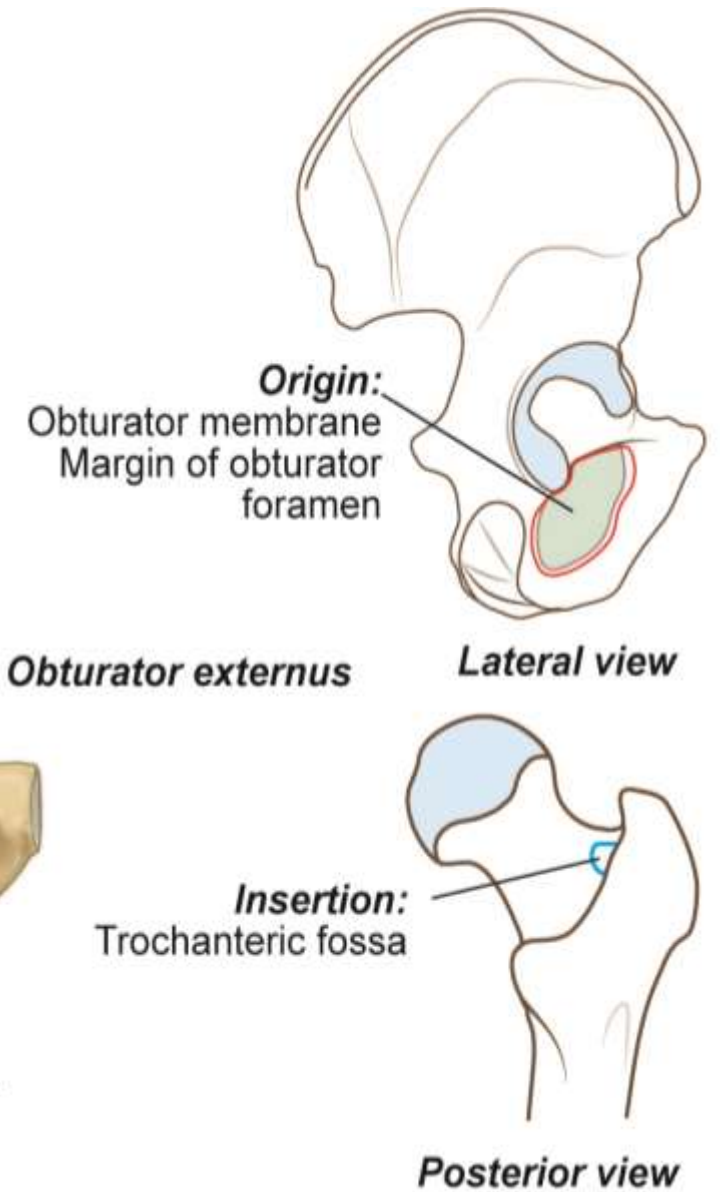
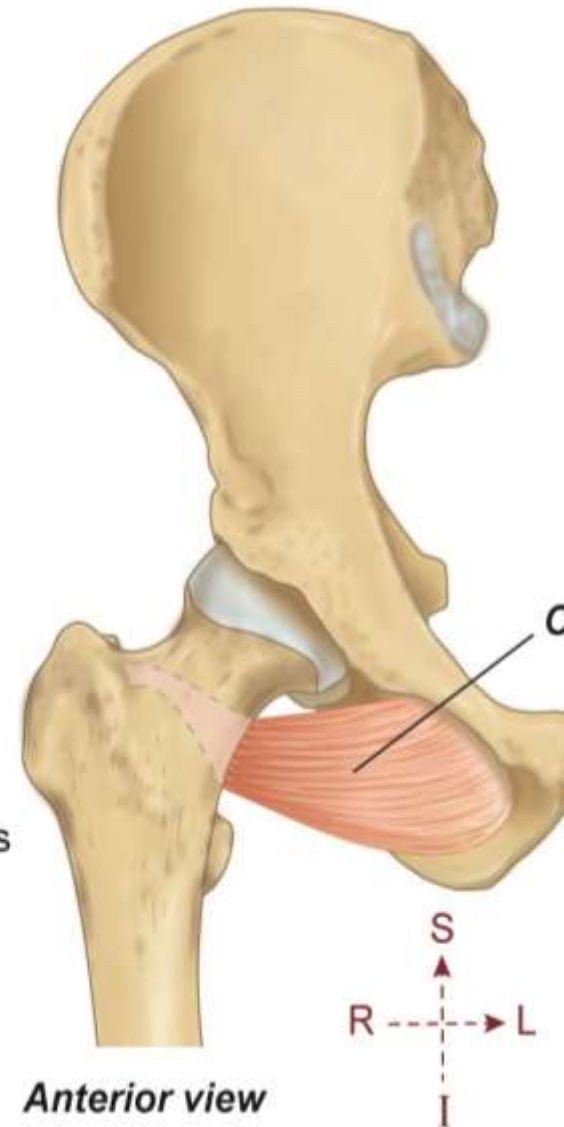
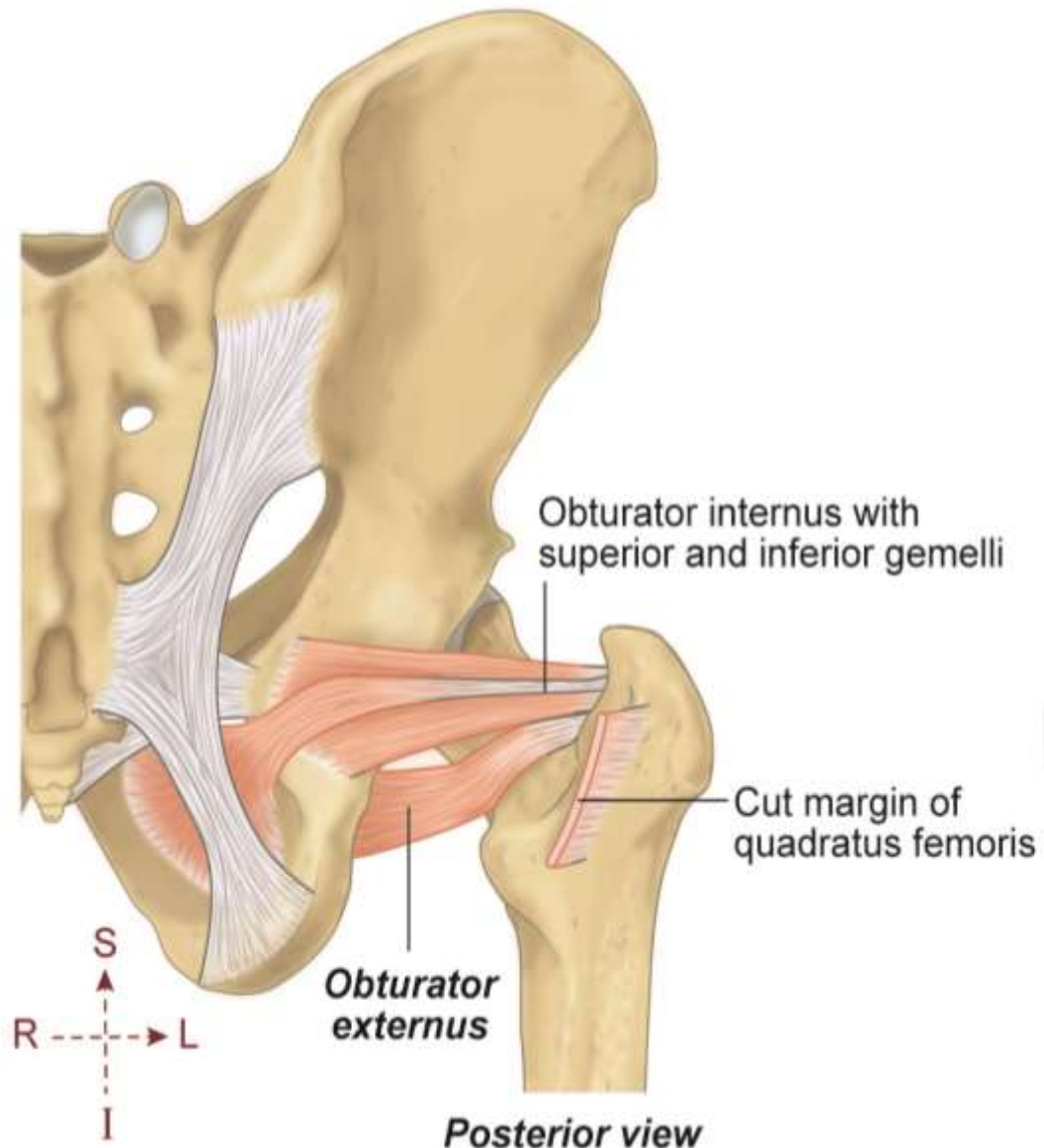


# Piriformis, Obturator internus, superior gemellus, inferior gemellus, & quadratus femoris:- origin & insertion



# Obturator externus

## origin & insertion



*Gluteal region is supplied by following nerves*

*Superior gluteal nerve*

- Supplies
- Gluteus medius, gluteus minimus, tensor fascia latae, and hip joint

*Inferior gluteal nerve*

- Supplies gluteus maximus only

*Sciatic nerve*

- Does not give any branch in gluteal region

*Posterior cutaneous nerve of thigh gives*

- Perineal branch – for skin of posterior 2/3<sup>rd</sup> of scrotum or labium majus
- Gluteal branches – for skin of posteroinferior quadrant of gluteal region

*Gluteal region is supplied by following nerves*

*Nerve to quadrates femoris*

- Supplies inferior gemellus, quadratus femoris, and hip joint

*Pudendal nerve*

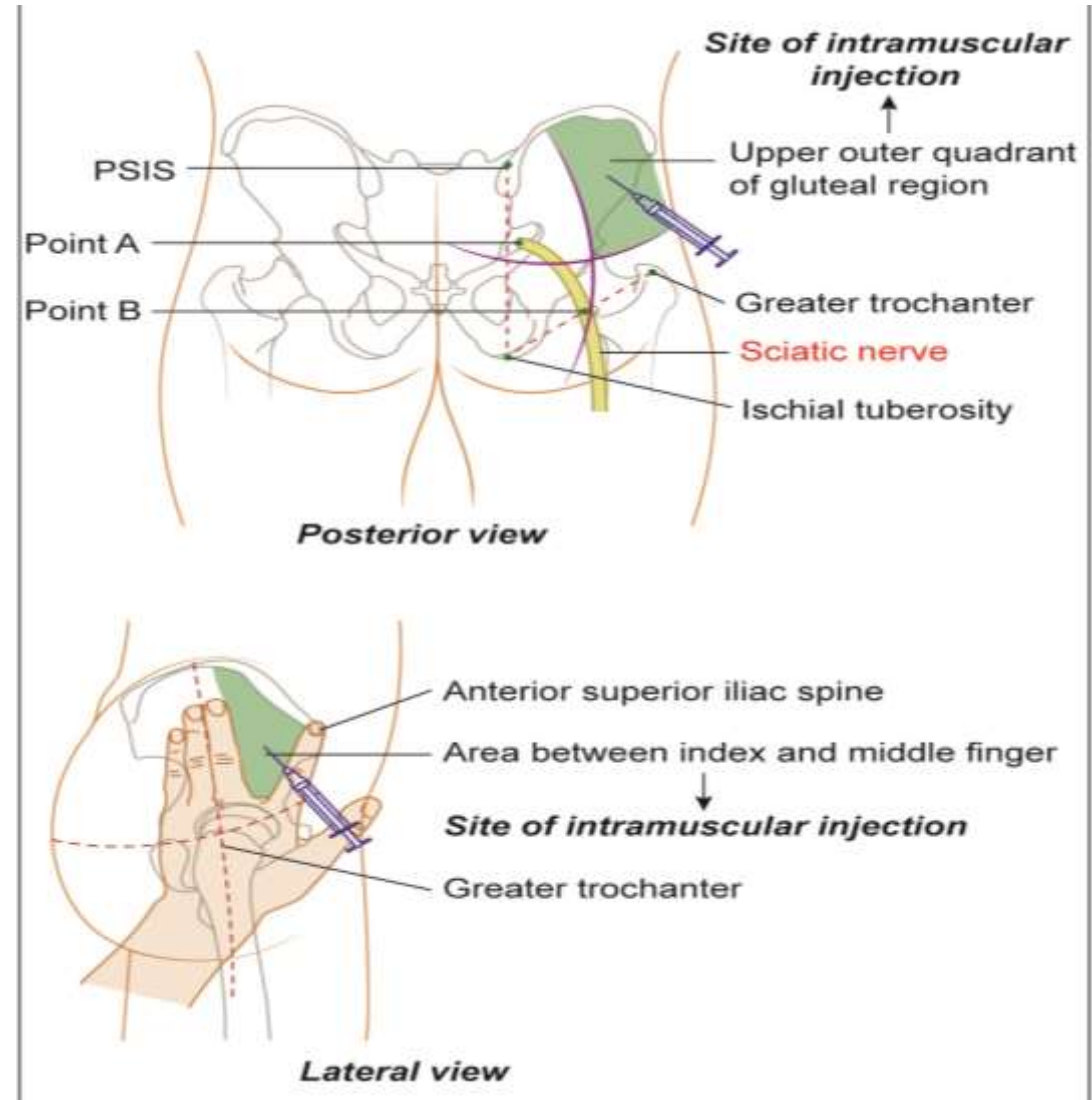
- Does not give any branch in gluteal region

*Nerve to obturator internus*

- Supplies obturator internus and superior gemellus

## *Clinical Integration*

- *Intramuscular injection*
- Save sciatic nerve during intramuscular injection
- *Upper outer quadrant* of gluteal region – most commonly used quadrant for intramuscular injections
- Prevents injury to sciatic nerve has outward convex course between following points





**Thank you**